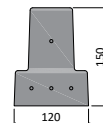


CS120

Beam and Block Load Span Tables (m)

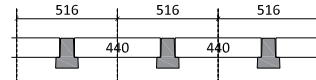
Dead Load (kN/m ²)		
1.57 (75mm Lightweight Screed & Finishes) + 0.04 (75mm Insulation)		2.40 (100mm Conc)
Partition Allowance (kN/m ²)		
0.50	1.00	Garage 9kN (point)



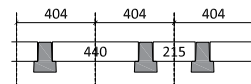
Self Weight = 31.9kg/m

Configuration	Imposed Load (kN/m ²)						
	1.50	2.00	3.00	4.00	5.00	7.50	2.50
S516	4.234	3.885	3.597	3.184	2.816	2.177	3.407
S404	4.747	4.365	4.048	3.781	3.550	2.785	3.758
S291	5.300	5.073	4.720	4.417	4.165	3.682	4.105

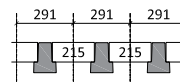
"S516"



"S404"



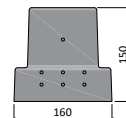
"S291"



CS160

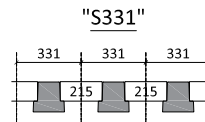
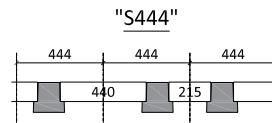
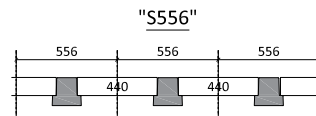
Beam and Block Load Span Tables (m)

Dead Load (kN/m ²)		
1.57 (75mm Lightweight Screed & Finishes) + 0.04 (75mm Insulation)		2.40 (100mm Conc)
Partition Allowance (kN/m ²)		
0.50	1.00	Garage 9kN (point)



Self Weight = 48.0kg/m

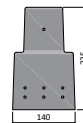
Configuration	Imposed Load (kN/m ²)						
	1.50	2.00	3.00	4.00	5.00	7.50	2.50
S556	5.127	4.716	4.390	4.121	3.896	3.444	4.597
S444	5.675	5.232	4.878	4.586	4.340	3.862	4.956
S331	6.300	5.960	5.570	5.247	4.974	4.440	5.423



CS225

Beam and Block Load Span Tables (m)

Dead Load (kN/m ²)		
1.57 (75mm Lightweight Screed & Finishes) + 0.04 (75mm Insulation)		2.40 (100mm Conc)
Partition Allowance (kN/m ²)		
0.50	1.00	Garage 9kN (point)



Self Weight = 60.0kg/m

Configuration	Imposed Load (kN/m ²)						
	1.50	2.00	3.00	4.00	5.00	7.50	2.50
S528	6.542	6.047	5.649	5.319	4.817	3.780	5.924
S416	7.233	6.707	6.280	5.924	5.622	4.740	6.575
S303	8.000	7.637	7.177	6.791	6.460	5.805	7.276

